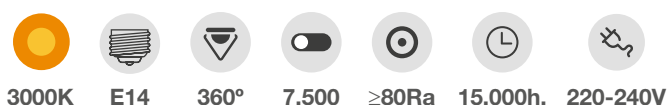
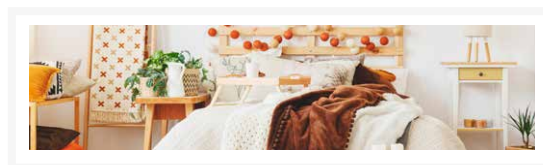


LÁMP. LED VELA

4W E14 3000K



Lámpara LED // LED lamp // Ampoule LED // Lâmpada LED

Potencia // Energy used // Puissance // Poder **4W**

Luminosidad // Brightness // Luminosité // Luminosidade **470Lm**

Casquillo // Base // Coquille // Cap **E14**

Temperatura // Light apparence // Température // Aparência leve

Cálida / Warm **Fría / Cold**

 3000K

Temp. funcionamiento // Working temp. // Température de fonctionnement // Temperatura de operação

« **Máx. +40°C** **Mín. -20°C** »

Ángulo apertura // Beam angle // Angle de faisceau // Ângulo de feixe **360°**

Tiempo de encendido / Starting time / Heure de départ / Hora de início **<0.5s**

Luz completa inmediata / Instant full light / Éclairage instantané / Luz plena instantânea **100%**

Dimensión / Size / Dimension / Dimensioe **Ø35x98mm**

ON/OFF **7.500**

CRI (Ra) **≥80**

Hg **0.0**

mA **34mA**

IP **IP20**

Vida / Life / Vie / Vida **15.000h.**

Voltaje / Voltage / Tension / Voltagem **220-240V**

Hz **50/60Hz**

Embalaje / Packing / Emballage / Embalagem **20/100**

BENEFICIOS: reduce el consumo, el mantenimiento, no parpadea, protege el medio ambiente, no contiene mercurio,... **APLICACIONES:** casas, hoteles, restaurantes, supermercados, oficinas, negocios, bares,...

BENEFITS: it reduces consumption, maintenance, it does not flash, it protects the environment, does not contain mercury,... **APPLICATIONS:** houses, hotels, restaurants, supermarkets, offices, businesses, bars,...

AVANTAGES: faible consommation et maintenance, ne clignote pas, respecteuse de l'environnement, ne contient pas de mercure. **APPLICATIONS:** foyers, hotels, restaurants, super- marchés, bureaux, bars,...

BENEFÍCIOS: reduz consumo, manutenção, ele não pisca, protege o ambiente, não contém mercúrio,... **APLICAÇÕES:** casas, hotéis, restaurantes, supermercados, escritórios, empresas, bares,...